

CHIRODR

TAILORED SOFTWARE AND HARDWARE FOR THE CHIROPRACTIC MARKET

20/20 Imaging brings 20/20 vision to your practice offering a full line of dedicated Chiropractic solutions. Our versatile flatpanel detectors can be configured in both retrofit (existing x-ray equipment) as well as our brand new exclusive Straight-Arm x-ray configuration. At 20/20, we realize that one size does not fit all, and provide systems built to your specific needs. Includes; digital panel, acquisition workstation, exposure interface, latest computer technology, full Opal-Chrio software package with comprehensive Chiro-Tools, and offer the best product warranties in the business.

CDR HG+

CDR's 14x17 CCD sensor directly captures the image data and displays it on an acquire computer workstation within 10-12 seconds from exposure. It is adaptable to most existing x-ray systems with our universal grid cabinets.

CFP-G FLATPANEL

The versatile Flat Panel DR system offers images within 3-4 seconds of exposure. The 17x17 inch panel produces the highest quality images and is configurable on multiple chiropractic stands.

OPAL-CHIRO PACS FEATURES & FUNCTIONALITIES

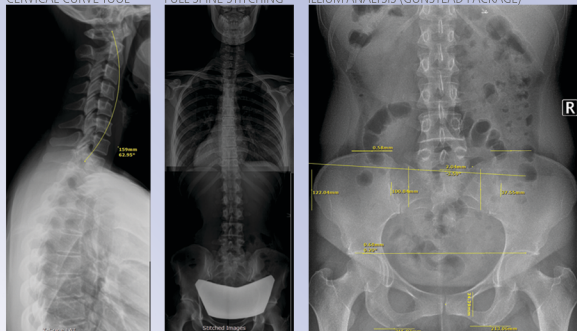
20/20 Imaging's Opal-CHIRO offers a completely Web-based PACS solution designed to streamline facility workflow with intuitive, easy-to-use features.



Retro-fit solutions

COMPLETE Straight-Arm X-Ray

CERVICAL CURVE TOOL FULL SPINE STITCHING ILLIUM ANALYSIS (GONSTEAD PACKAGE)



- Atlas Orthogonal Analysis
- Gonstead measurements
- Upper Cervical Analysis
- George's Lines
- Ilium Analysis
- Line Drawing
- Measuring
- Angles (Regular, Cobb)
- Cervical Curve
- Lumbar Curve
- Orthospinology
- Full Spine Stitching
- Spine Labeling

OPTIONAL* mOpal MOBILE VIEWING

iPad®, iPhone®, Android™, BlackBerry®, and more



Anywhere, Anytime Viewing now on Any Device

mOpal (mobile Opal) is a browser-based viewer for reviewing images on Mac, Windows, mobile devices, tablets and smart phones including iPad, iPhone, Android, and BlackBerry. With mOpal, receive fast access both onsite or remotely, available with any 20/20 system.

*mOpal license available at an addition cost

CUSTOMIZED CHIROPRACTIC PACS TOOL-SET

20/20 Imaging integrates the specialized Viztek chiropractic tool-set offering advanced measurement and alignment tools in addition to the standard set of advanced PACS tools and functionalities.



20/20 Imaging

471 Jennings Dr. Ste A Lake in the Hills, IL 60156
 Phone: 866-734-6234 • Fax: 919.772.2810
 Email: info@2020imaging.net • www.2020imaging.net

WOULD YOU CONVERT TO C-DR FOR \$299/MO?

ASK US HOW CALL 866-734-6234 FOR MORE INFO